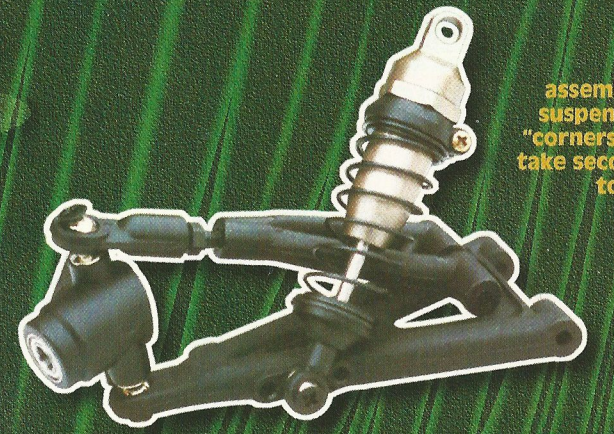


Thunder Tiger Challenger

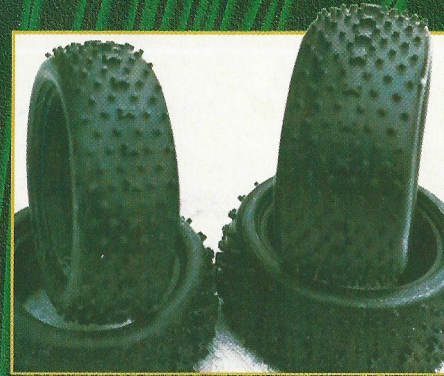
Andy Benson

Pro Review

The assembled suspension "corners" on take seconds to fit.



Please Santa !!!!



The kit "X" pattern tyres give plenty of grip on grass.

Time for the radio gear

Already its time for the radio gear, so I chose an entry level two channel set for the review and the Hi-TEC RANGER seemed an obvious choice. Although not as sophisticated as my normal JRX756, the Ranger system was easy to set up and included servo reversing which was useful. The steering servo and throttle servo sit neatly on to a radio plate with ample room for the receiver and fuel tank. Throttle adjustment came next so I took extra care on this part to ensure that throttle and brake worked smoothly, as this is a critical part on an 1/6 powered car.

Tuned Pipe and Tyres

A beautifully made tuned pipe comes next, which is held onto the anodised exhaust pipe by a large piece of silicone tube, secured by cable ties.

Wheels and tyres were next on the list, good quality 'X' pattern mini spike tyres were included with foam liners! This is some spec for an entry level car!

Just an evenings work

That's it, we've finished the mechanical side of things, an evenings work maximum from box to

rolling chassis! It was still light so I decided to crank the engine and have a blast, the body shell could wait! I loaded up the tank with 10% Nitro glo fuel, clipped on the glo battery and pulled the starting cord, but the engine would not run for more than a few seconds. A quick phone call to an engine expert (thanks dad) suggested that I might have a hole in the fuel pipe, he was right, I had nicked the pipe, so as ample length was supplied in the kit I cut another length, and pulled the starting cord, ITS ALIVE!!!!!!

I ran a tank of fuel through the engine using my truck stand to keep all four wheels in the air, with the engine set very rich, with plenty of blue smoke engulfing the Vale of Evesham!!! A quick McLaren refuel followed, I adjusted the needle valve to give a leaner mixture and spent the next half hour rocketing up and down the driveway, the disc brake locking all four wheels if required (which it was quite regularly as the grin on my face got wider, and the terminal velocity towards the flower bed got higher!!!!!!).



Grin
Factor

90% Assembled

If you are new to the r/c scene and fancy something outside of the normal entry level electric market then your choice has been somewhat limited, until now! For the aspiring Jamie Booths out there, THUNDER TIGER have introduced a 1/10th scale four wheel drive buggy, which is a scaled down version of a full blown 1/8th rally cross machine, with the advantage of a pull-start engine not only supplied, but mounted, meshed and ready to scream!!!

The Challenger Pro is virtually 90% assembled consisting of a double deck chassis, complete with three differentials, disc brake, and of course the Thunder Tiger PR012BZX engine which just oozes power when you look at it.

Just mount the corners

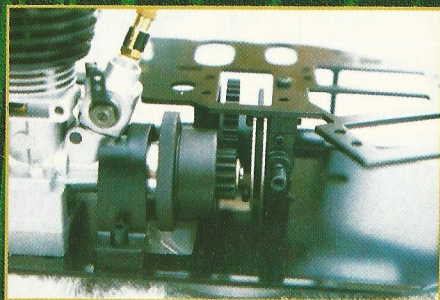
At each corner of the chassis ready assembled wishbones and uprights are fitted with neat and very smooth dampers already in place. Dog bone drive shafts feed power through to hardened drive cups which are supported in high quality ball races, with positive slot and pin drive system taking power to the one piece moulded wheels. Fitting the wishbone assemblies literally takes minutes, using the hardened steel pins and a posidrive screw driver, so my coffee was still warm as I moved onto the steering assembly. No trouble here, good quality ball joints provided positive location onto the steel balls, a nice snap fit and easy adjustment following the length's as detailed in the instructions.

CAUTION

It is important to remember that some of the materials used in your car kit can become very brittle and easily broken when the car is used in very cold weather (outside temperatures below 10°C / 50°F). Parts such as suspension arms and steering blocks can break if your car is run into a wall, curb, or other obstacle when the temperature is very low.
If you must operate your car in cold temperatures, try not to hit your car into any obstacles.

90% ASSEMBLED

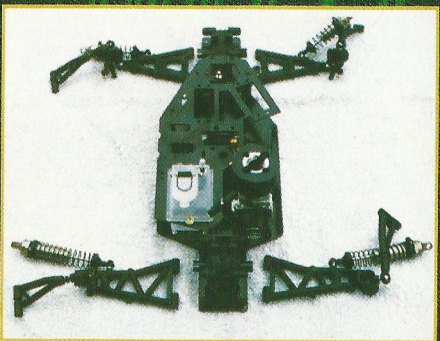
Read this carefully.



Centre Diff and Brake Disc.

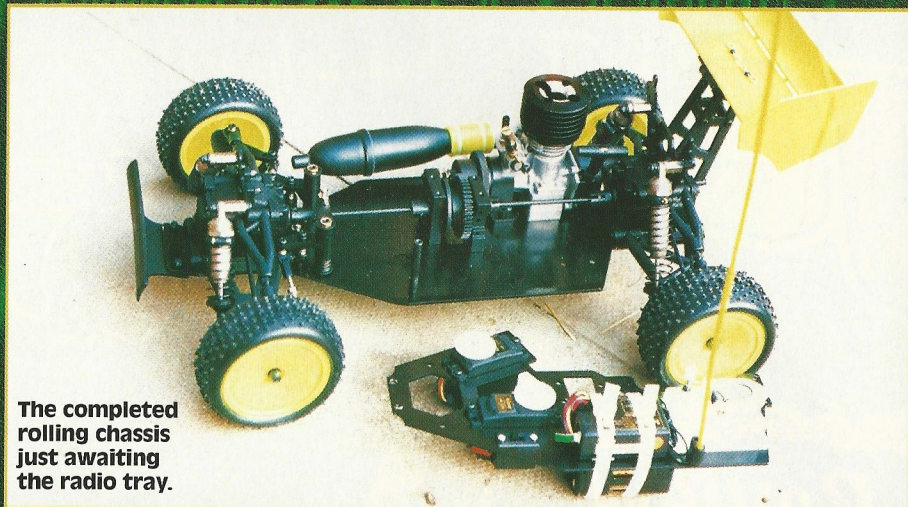
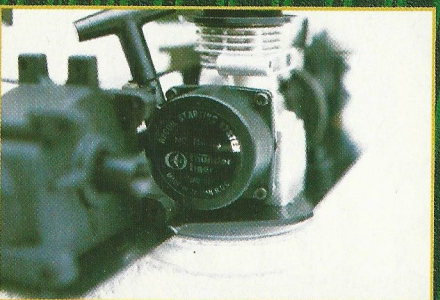


A good radio for any beginner radio, the Hi-Tech Ranger.

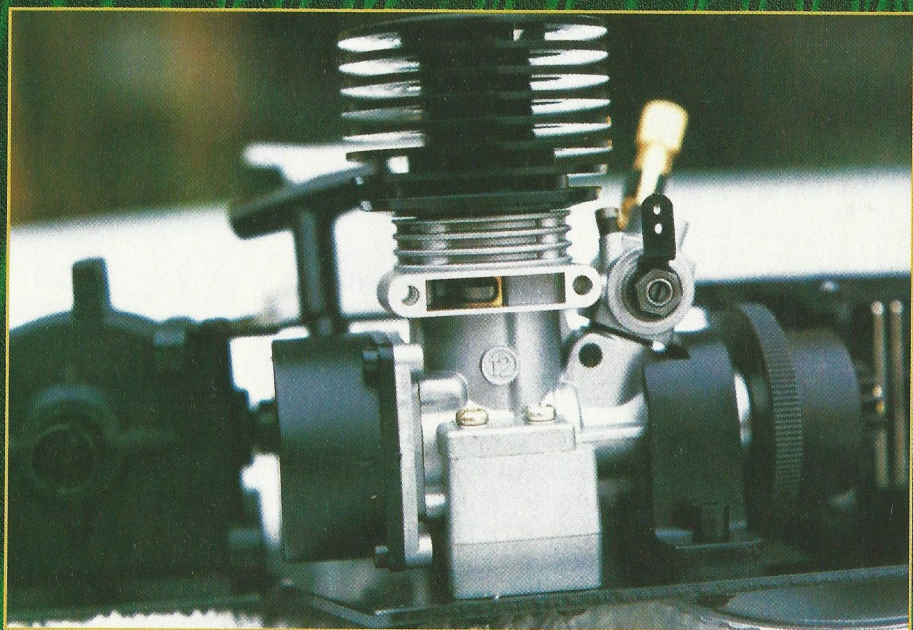


Just as it comes out of the box.

A substantial Pull-start is part of the package.



The completed rolling chassis just awaiting the radio tray.



The heart of the beast, the Thunder Tiger Pro12 engine.

Kill the noise Benson

This was fun. It was then recommended that the neighbours had quite enough of the mini-monaco antics, so I was persuaded to revert back to the garage to paint the bodyshell. A simple design of shell was included, moulded in crisp clear lexan, so I decided to follow the design on the box using Custom Colour blue and yellow followed by a substantial choice of stickers to add the finishing touches.

Overall

Overall comments? Great fun, building or rather the lack of it, couldn't have been easier with plenty of written and visual instructions to help the novice. Acceleration is very rapid and top speed is something else, certainly quick enough to frighten even the most dedicated r/c modeller, although the disc brake does a superb job of hauling the Challenger Pro to a halt when you get over ambitious with the left stick (Trouble is I've become a throttleholio with this kit!!!)

For serious off roading I am considering changing the steering servo to something a bit more powerful such as the HI TEC HS605BB, as on rough ground with full power on, understeer does take over, but for the novice the

HS300 servos are more than ample.

If a series takes off for 1/10th 1/C 4wd Off-Road I will be there, with the Challenger PRO, until then it will find its place with novices and those of us who just fancy something a bit different!

Order one from Santa r.r.p. £289.99

QUICK SPEC

90% Assembled. 4WD. Shaft Drive. Triple Gear Diffs. Alloy Chassis & Radio Plate. Dog Bone Driveshafts. Thunder Tiger 12 BZX Pro. Integral Pull-start. Tuned Pie Exhaust Centrifugal Clutch. Disc Brake. Independent Suspension. Top Link & Bottom Wishbone. Front & Rear. Coil-Over Oil Filled Shock Absorbers. Dish Wheels. X Pattern Tyres. Moulded Rear Wing.

TESTERS KIT

Transmitter- Hi Tech Ranger
Servos- HS 300
Fuel- Model Technics GN 10
Glow Plug- Model Technics Firepower F4
Glow Supply- Thunder Tiger Red Glow