

Track Test

by Jon Moulton

The latest in fun
1/10 R/C cars
from Japan



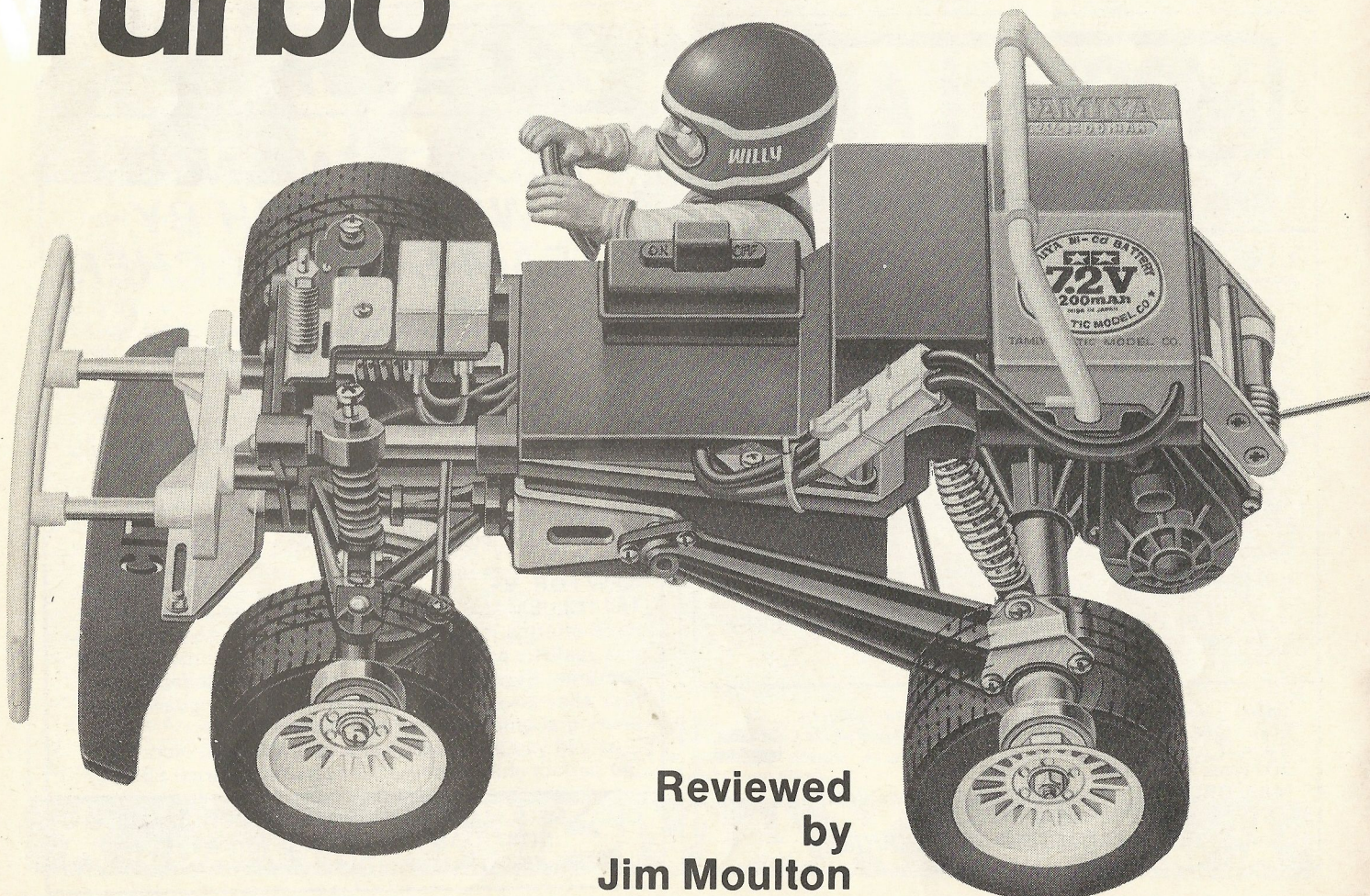
Honda City Turbo

TAMIYA'S INTRODUCTION of the stunt car, with instant 'wheelyability,' opened a new avenue for R/C cars when the Jeep appeared last year. Now it's been civilianised with an enveloping body and some refinements as the 'City' variant. The chassis of this 'Honda City Turbo' is the same as used on the Jeep, so any previous builder will be able to assemble without the slightest difficulty.

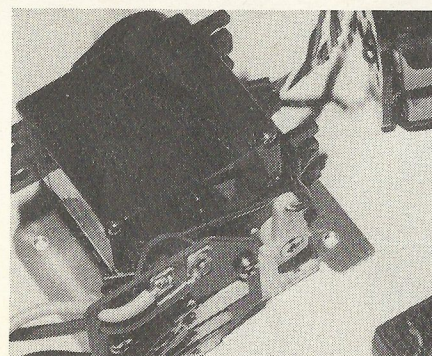
Construction of the front suspension is straightforward, so long as the left and right hand wishbones are not mixed up, and thread locking compound *must* be used on the steering track rod pivot balls as they will soon work loose. A simple servo saver is incorporated in this unit, which is also adjustable — just another of the really clever Tamiya features.

The rear axle assembly is separate from the motor gearbox, connected by a universal joint and it goes together faultlessly, but it must be noted that each of these assemblies should be filled with grease. Only one small tube is provided, which is hardly enough for even one of the assemblies with our liberal treatment, so a trip to the shop might be avoided if the vaseline tin is handy! The axle itself is held by trailing arms which are half the length of the chassis and also by tie bars to the centre of the chassis. These tie bars play a crucial part in the suspension of the axle, as, if they are too loose, the axle will sway from side to side. If too tight, the trailing arms will be under stress on full travel so be careful! Easiest way of setting these up is to set them loose, and then tighten until the suspension travel is just affected.

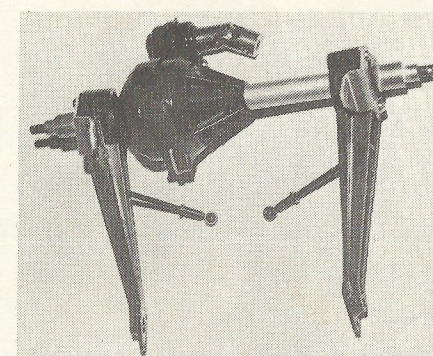
The wheels/tyres are much smaller in diameter than those of the jeep, and have a new type of mixed tread, (possibly a wet or dry weather tyre?) They are of the semi-pneumatic type, which *have* to be glued to the edges of the rim. Four small holes are provided



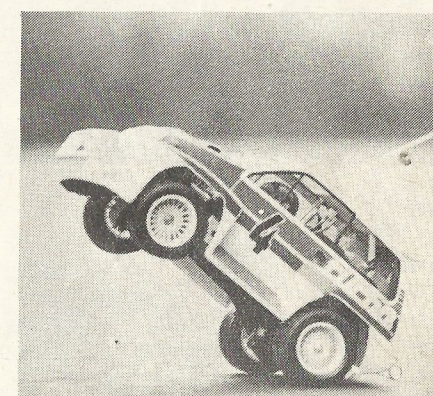
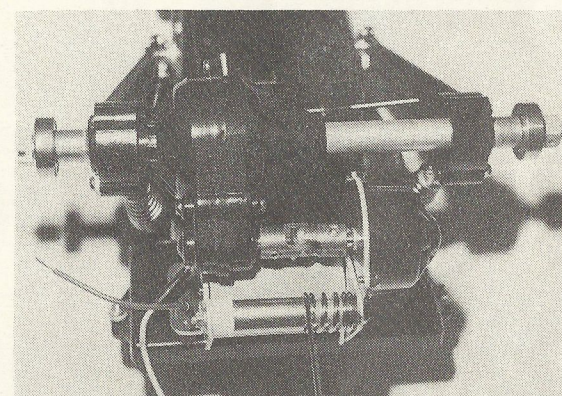
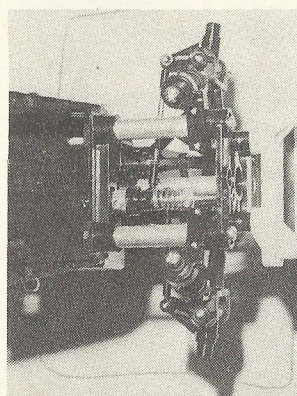
Reviewed
by
Jim Moulton



Above: Acoms R/C receiver and switch harness with switched resistor speed controller attached to Acoms servo ready for installation.



Above: rear axle unit is built up from several plastic mouldings and metal parts. Tie-rods help to control sideways tramp in similar fashion to 'Panhard Rods' fitted to full-size vehicles.



in each side which Tamiya say should be filled with glue when the tyre is fitted. On our model they were left open, giving a 'soft' tyre, able to 'breathe'.

Radio installation is straightforward and the slight difficulty we had with the jeep is now overcome by a small modification. The mounting plate has a guide flange for the throttle servo, and then this plate is bolted to the chassis. The steering servo is then stuck with double-sided tape on the top of the throttle servo, and is linked to the steering by a simple pin in the servo horn, connecting another crank. And that's almost all there is to it, about 6 hours will see the 'City' ready for the road — dependent on how long it takes one to stick the colour decals onto the body!

Running

Our test surface was smooth tarmac which was fairly damp, but the car didn't show much wheel spin as it went straight into a wheelie at full throttle. Wow! Grip from these new tyres is very good indeed even when going flat out (when the front finally came down). Given full lock treatment, 'City' soon turned (in a slight four wheel drift) lifting only the front inside wheel. Clever stuff!

Above left: front suspension sub-assembly is spaced out from the main chassis crate on aluminium tube spacers. Servo saver axis is unusual longitudinal system. Above centre: rear axle in position, an universal joint couples first stage reduction gearing from motor to final drive in the axle centre casing. Above right: this sort of wheelie is kids' stuff with the Honda City! Below: bizarre, fun car atmosphere matches the car's performance.

performance. Much more of a 'raver' (though perhaps slower due to higher road gearing), the 'City' is tremendous fun, excellent value and should be available from most good model shops. Price: £85.00.

