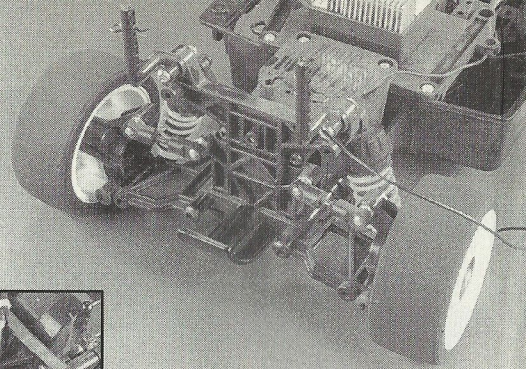
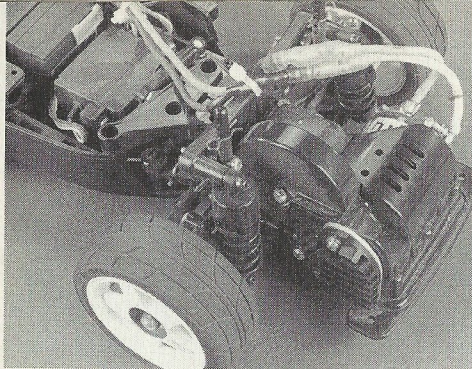


# Prime Number

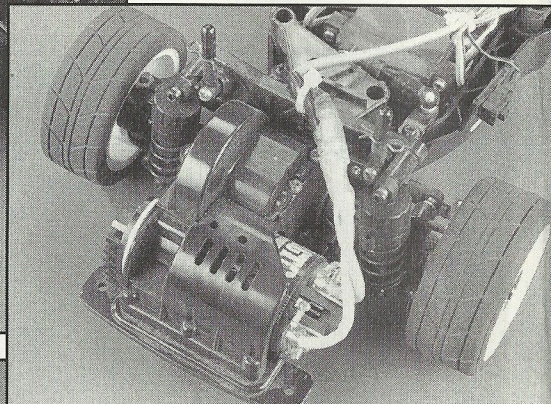
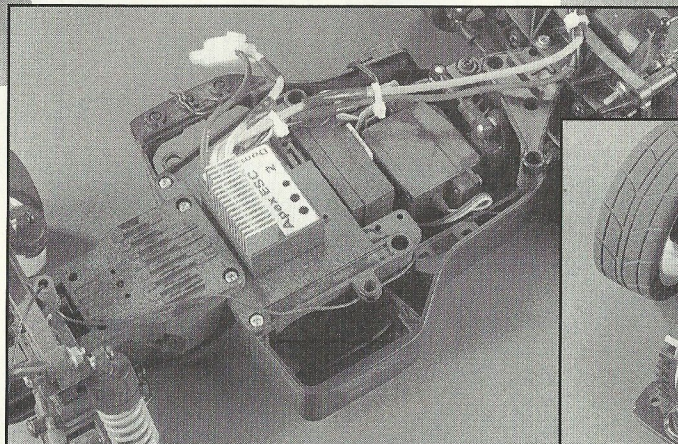
Take one limited production Tamiya Primera, ballrace, add an Acto Power motor and prepare with a 1700mAh battery, - then wait for take off...

This is one for any touring car fan. Tamiya of course make excellent kits of almost scale working models of real racing cars. In a past issue of RCMC we featured the Primera in Castrol kit form that we painted in Old Spice colours. The kits are easy to build, look like the real thing and are just amazing fun to drive.





That's not always the end of the story though. The new style Japanese Touring Car Championship started in 1994 called for 4 door, 2 litre cars. This new style of racing has given Tamiya endless new subjects to model. The new model here is based on the Calsonic version and Tamiya have made this particular kit in 'Limited Production' style with the addition of some special features...

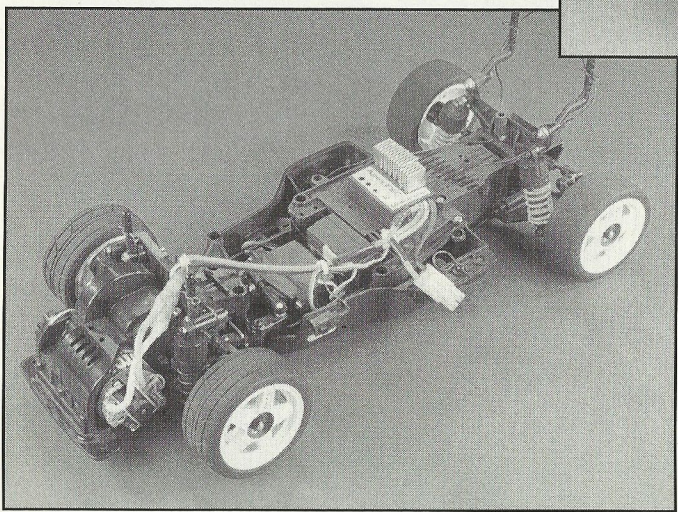


### What is new?

The standard Tamiya Primera kit has been given a series of upgrade parts to aid handling, speed and... looks.

Firstly is an aluminium motor mount (53177) that makes the motor fitting more secure and helps with cooling. Next is a set of slick tyre inner foams (53113) these go inside the tyres and help increase grip. For the suspension a set of two blue and two red springs from the Touring Car spring tuning set are included.

In the looks department there are two red and two blue alloy wheel nuts, these are just like the



Above; On our test car we fitted the Tamiya Acto Power motor for explosive performance.

Also seen here are the radial tyres that are super sticky but still struggle to lay the power down from a fully modified motor and 1700mAh battery pack.

decided to ballrace our car and add a full blown modified Tamiya Touring Car motor and electronic speed controller. We also fitted the new radial tyres (53228) which just give the ultimate grip.

So, fully charged Tamiya 1700mAh battery installed, Acto Power Touring Car Motor, super sticky radial tyres and a car park....

The speed of this thing is ballistic, remember all this power through the front wheels, hitting the power gives an embarrassing amount of wheel spin, eventually the car moves forward as the tyres start to grip and suddenly the speed builds rapidly and takes you by surprise. Speed is high, grip seems low but driving this kind of power through the front wheels is asking for trouble!

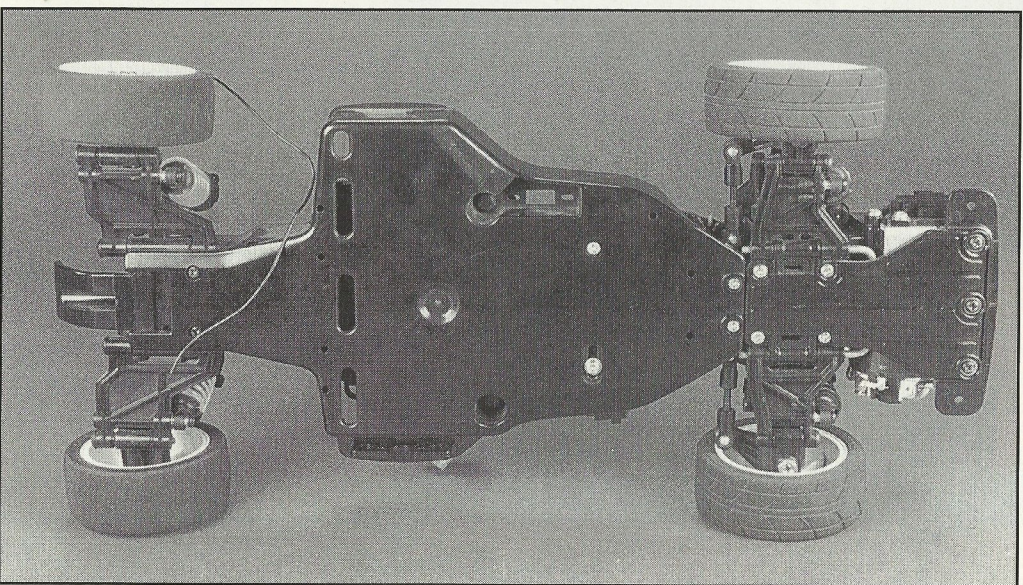
Steering is sharp and smooth unless the brakes are applied (electronic speed), this gives sudden understeer.

This car is a real improvement on the standard type of front wheel drive kit, it looks a little more professional and is considerably faster with the Sport Tuned motor and silly fast with the Acto Power. Highly recommended but find a wide open space for first test flight!

Available from Beatties and good model shops.

Priced at £149.95

Acto Power Motor £45.00



real things with the colour denoting left and right handed threads (on the real thing!).

A Sport Tuned motor is also included that will increase acceleration and top speed. This is still a 'Standard' type motor but

has higher performance than the usual Tamiya kit motor.

Last but not least for performance are new one piece, five spoke wheels that have a 2mm wider offset to improve handling further.

### On the track

Well maybe not on the track but in the RCMC car park for a full test...

We decided that the new spec of car was excellent. But.... we