

Tamiya have produced the stylish Mitsubishi Pajero in a realistic 1:10 scale, Marcus Nicholls takes a test drive.....



4WD FASHION

• Fashion affects not only clothes and music, but cars as well. Fads come and go – hot hatches, sports cars, two seaters, four seaters etc, but one type of transport that seems to have gained a lot of popularity is four

• wheel drive, all terrain vehicles. Land Rover and Jeep are known around the world, and have almost become generic names. In the last decade however, Japanese car manufacturers have generated

some very high quality vehicles, and it is one of these: the Mitsubishi Pajero (Shogun in the UK), that is the subject of Tamiya's newest RC car kit.

The first thing that strikes you when looking at the model is its scale realism – this is due to a chassis with scale wheel base and

• track, plus an injection moulded ABS bodyshell for maximum detail reproduction.

• New from the wheels up

• Construction starts with the drive train and chassis, and you will immediately notice that the Pajero's

• backbone is completely new. A geared differential will be familiar to anyone who has built other Tamiya 4WD cars, but there most similarities end.

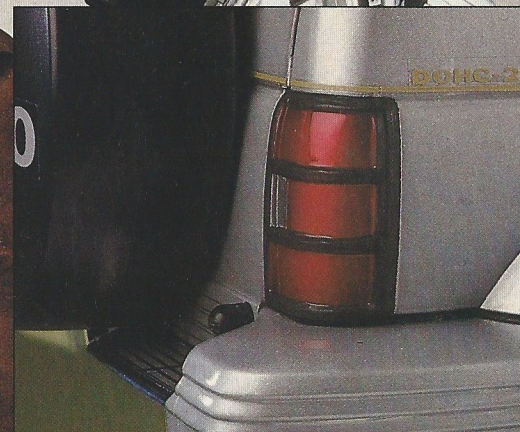
• The diff loads directly into a space in the chassis, allowing nearly central positioning of the motor for good weight distribution. As always,

• the transmission bearings and motor can be upgraded with Tamiya Hop-Up Parts. For convenience, these alternative parts should be purchased before construction begins.

• Many of the suspension elements are anchored using ball joints, which need quite a lot of pressure to snap into place – make sure these parts



Just like the real thing - the tyres on the Tamiya model. Below; Body detail is superb as is the rear light detail.

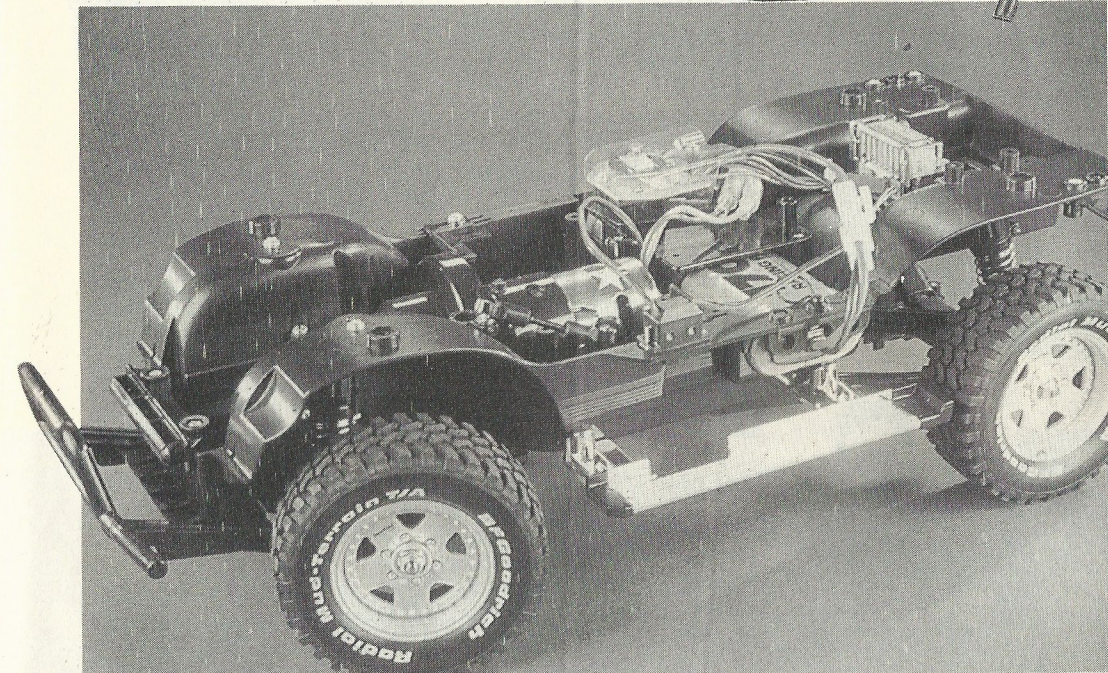
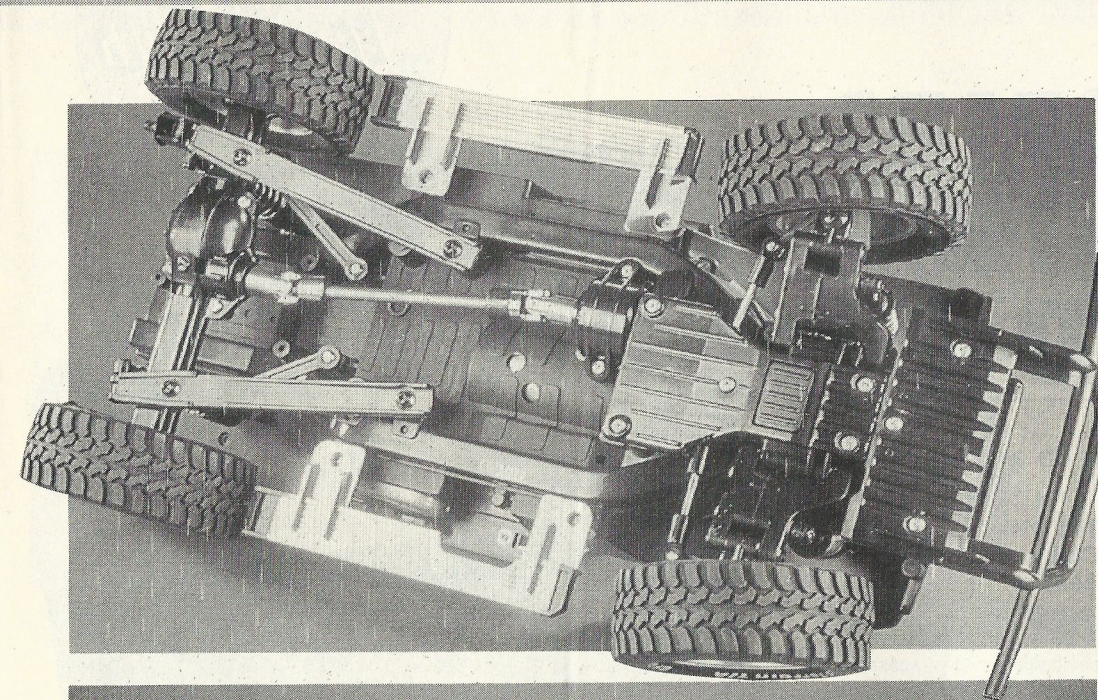


are correctly oriented before you click them in position! The front suspension is of the wishbone type, and once built up is very substantial. Drive to the front wheels is via new type CV joints, similar to those found on Tamiya's front wheel drive car range, and here a set of ball races would reduce rolling resistance considerably.

The rear axle carries a geared diff, enclosed within a neat and realistic two part solid axle moulding. If you intend to use your Pajero in really muddy off-road situations,

- Tamiya offer a pair of mouldings that fit inside the rear diff, effectively locking all movement. It's a clever solution, but the rear axle will have to be stripped and re-built if you wish to free up the diff again.

- A series of trailing arm linkages secure the rear axle to the chassis, and again, snap-in ball joints provide the pivot points.
- The finished suspension assemblies flop around until the dampers/springs are fitted, then it all sits precisely and looks very realistic.



Top; Underside is tough and strong and is moulded to like the real item. Above; Under the skin is the mid mounted motor.

Radio fitting

- Radio control and power supply installation is fully explained in the instructions, with a guide to fitting a more sophisticated electronic speed controller, also available as an upgrade option from Tamiya.

- The wheels are the peak of Tamiya design - although they are plated plastic, they look completely realistic and modellers are bound to use them on other Tamiya cars! The tyres are superb mouldings with a mega chunky tread pattern and pre-printed BF Goodrich logos.



- As mentioned, the body shell is a conventionally moulded ABS resin, which renders detail more sharply than blow moulded lexan. It does however mean that you spray it from the outside, which will require careful planning to ensure a glossy finish.

- Always use at least two coats of primer (a very resilient, matt paint) to seal the plastic, rubbing down between coats. We use Halfords White Primer due to the large size of the can (we get through a lot of this stuff!), but Tamiya do offer their own product. A chart in the instructions give the various colour options, all matched to Tamiya TS Spray paints.

- The Tamiya sprays do give a very good gloss surface "straight from the can", but if you need a higher gloss, try a gentle rub down with Tamiya Compound, a mildly abrasive polish. Holts T Cut is a good alternative if you can't find the Tamiya product.

- With the body painted, add the glazing, headlights, stickers and optional lighting kit, and you're all done! The Pajero is not really intended for competition (although somebody is bound to race them!), but for showing off its scale good looks.

- It's the best in the line of 4WD recreational vehicles on the model market, taking pole position in terms of sheer quality and realism - well what did you expect, it's a Tamiya!

Specification:

- Electric powered, full time four wheel drive, off road vehicle. Front and rear geared diffs, rear diff-lock option. One piece, injection moulded chassis with mid-mounted 540 size motor. Drive train fully upgradeable with Tamiya Hop-Up Options Ball Bearings.

Body shell:

- Injection moulded white ABS shell, with screw on fittings and tinted glazing.

General:

- The overall effect of this model is one of scale accuracy - and it's a perfect present for someone who owns a real Pajero!

Available:

- Soon from all Tamiya stockists.