

# KIT REVIEW

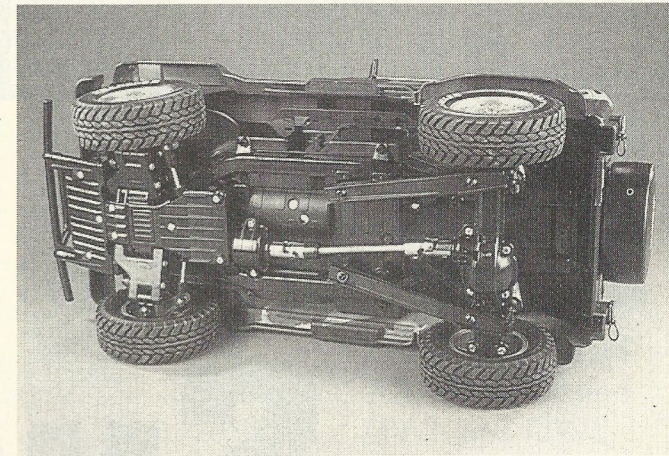
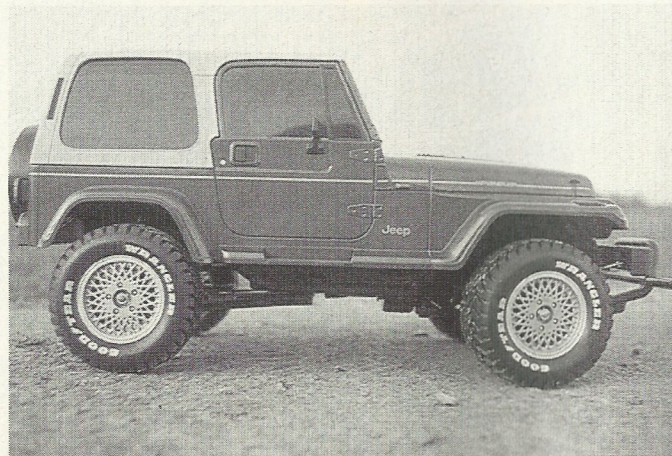
Reviewed by Marcus Nicholls



As the Jeep Wrangler from Chrysler hits the UK in a big way, Tamiya release a 1:10 RC version, and we build it!

# All Terrain





**T**here are some things in life that must be just right - Levis Jeans are cut the best, nothing compares to Häagen-Dazs ice cream, and whilst there are many fakes around, Timberland boots are the ones to have.

This slightly extreme (but honest) philosophy even extends to cars. Yes, there are many "four wheel drive" vehicles on offer, but with the exception on the Land-Rover and possibly the Range-Rover, the only one to be seen in is Chrysler's Jeep Wrangler. It embodies all that is good about American design - strength, power and off road capability, packaged in a well proportioned body that, like Timberland boots and Levis 501s, needs no selling, it's simply the genuine article.

### History sells

The desirability factor of a "must have" item is greatly increased if it has a history - especially a military one. Zippo lighters were popular amongst US servicemen, the Alpha Industries MA1 flight jacket inspires that Top Gun feeling (the real ones are also very warm and comfortable) and since WWII, surplus military clothing will often be seen inspiring elements of a clothes designer's latest collection.

The Jeep also has a past, reinforcing its desirability ten fold. Although totally changed, the basic design is derived from the famous Willys "General Purpose Vehicle" from WWII. The name was ultimately shortened

to GP, and thanks to the American military's love for acronyms, it evolved into "Jeep". Therefore, although available in a variety of colours (that doesn't unfortunately include matt olive drab) the '94 Jeep Wrangler still has echoes of military design that makes up a large chunk of its charisma.

### Tamiya model Chrysler's Wrangler

Tamiya have recently started issuing more kits of stateside oriented subjects - King Hauler and Globe Liner RC trucks, Chevy S10, Indycars both RC and static, and now the latest, the Wrangler Jeep.

Its backbone is Tamiya's new injected ABS four wheel drive

chassis which was launched with a Mitsubishi Pajero body, featuring independent front suspension and a live axle at the rear, with power supplied through an all metal drive train.

It looks very good, and it became immediately clear that a chassis with such a scale appearance as this one had the potential to form the basis of other scale RC models, and the Jeep Wrangler was an excellent choice for its second manifestation.

No problems were encountered when building the chassis up - Tamiya have perfected the art of instruction sheet design, and so long as this vital document is followed, even inexperienced modellers will steam through assembly.

### Solid body

Like the Pajero, the Jeep's bodyshell is a massive single ABS plastic moulding, for which modellers have to provide their own gloss finish (no painting from the inside here!).

This can actually be achieved with relative ease, but spraying large areas that must end up immaculate can be a bit stressful. The key is to prime all surfaces properly, then rub down to a smooth surface. This will give the following layers of paint the best chance to dry to an acceptable gloss finish. If metallics are being used, the necessary gloss lacquer coat will considerably improve the chances of obtaining a mirror like surface.


We used colours from Halfords aerosol range which are acrylics,

featuring excellent covering properties and quick drying times. The hard top was masked off after the metallic blue had fully cured and sprayed with Tamiya TS46 Light Sand. Finally, with all painted surfaces dry, detail painting of window rubbers, indicators door handles was carried out.

### 1:10 reality

With stickers applied and the specially designed Jeep wheels in place, Tamiya's 1:10 scale RC Jeep Wrangler was complete, and what a superb model it is. The chassis looks realistic when viewed through the wheel arches, and the one piece bodyshell holds the detail superbly. We haven't given

the Jeep a road test yet, but fully intend to install radio and battery and give it a drive.

Some things in life must be just right - there's no substitute for a real Jeep Wrangler, but unfortunately not everyone can afford one. A model of one is a good way of satisfying curiosity - Tamiya's is the best available, and definitely not a compromise... 

# WRANGLER

