

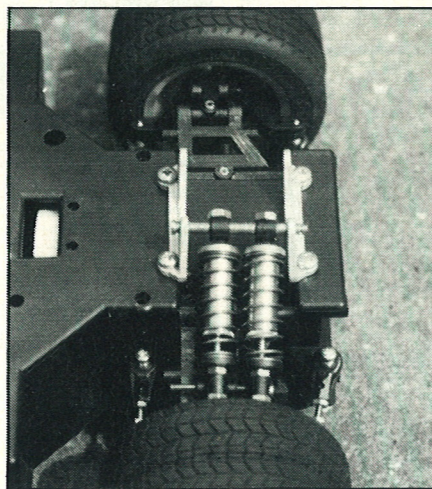
FERRARI TESTAROSSA

JOHN VARLEY looks at Robbe's 1/12 Supercar.

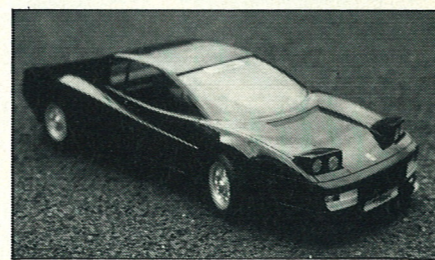
Robbe's Ferrari has all the class and style of the full size item in 1/12 scale. Fashioned to perfection the Testarossa screams two things at you, speed and money! Well you won't need £80,000 plus to buy Robbe's masterpiece, but just like the real thing you may well have to be careful where and under what conditions you drive the car. The Testarossa is not a typical 1/12 racer, its strength lies in a box which doubles as radio, battery and motor holder, this same box also keeps the back and front ends apart.

Suspension

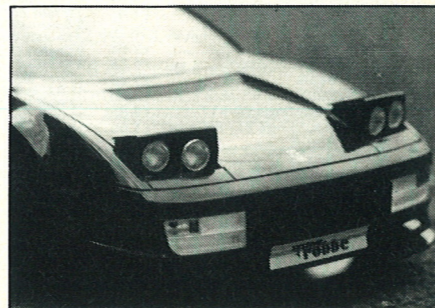
Both front and rear suspension is of the double wishbone type and moulded in black G.R.P., wishbones are divided into two sets of upper and lower but are identical front and rear. All mouldings are



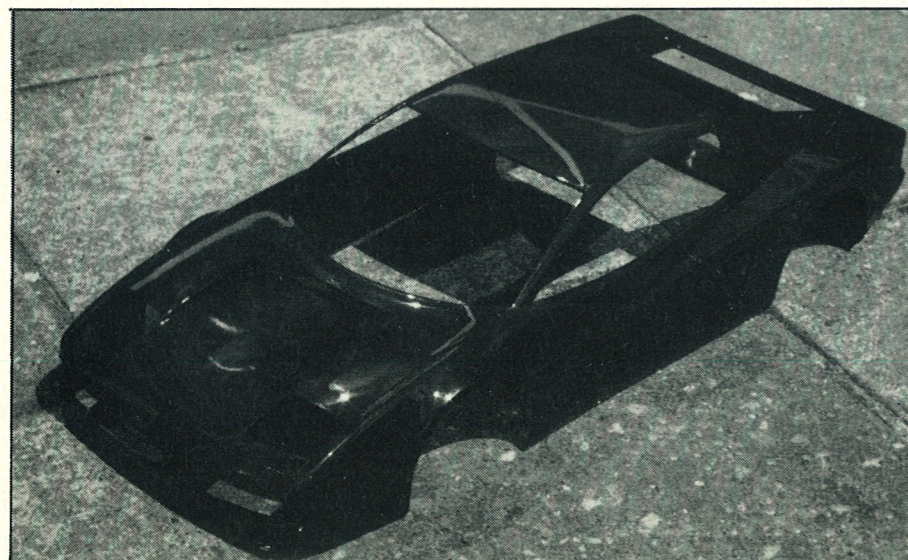
Wheels and tyres are a masterpiece of accurate moulding



Pop up headlights actually work.



The Testarossa bodyshell as it comes.

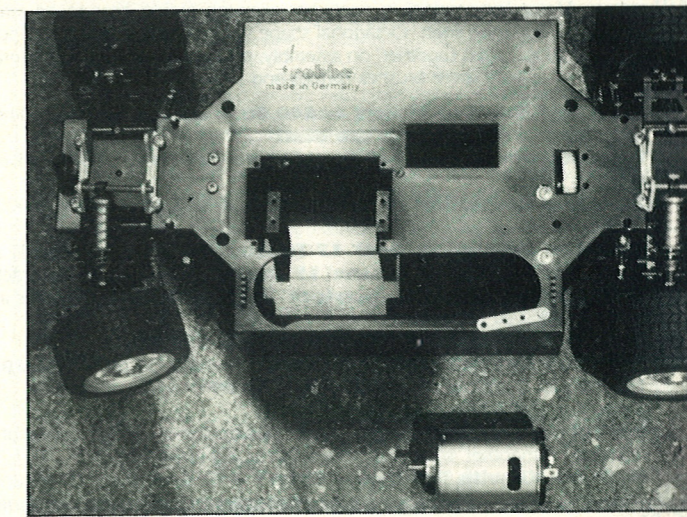
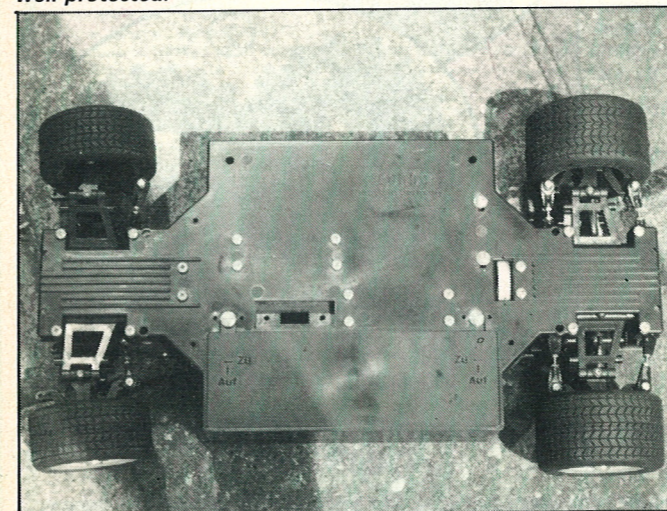
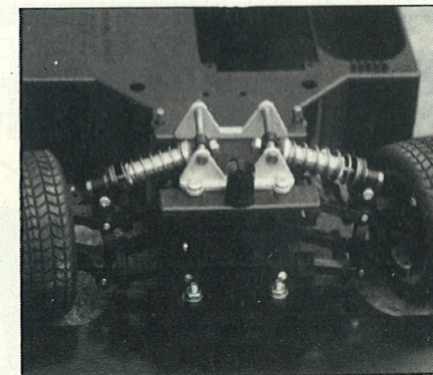


of very high quality and need just the barest of attention before assembly. Tie bars are used at the rear to provide tracking adjustment, the front wheels are also connected to the steering posts by the same type of tie bar, again this gives any tracking adjustment if needed. No camber adjustment is provided.

Shockers

Coil over oil shock absorbers are provided both front and rear, these are fixed rate units and provide adequate damping provided the car is run on carpet, or extremely flat surfaces.

Below right: the chassis provides structural strength as well as housing everything. Above: front suspension and shocker layout. Below: everything is fully enclosed and well protected.



Finish

The overall finish of Robbe's Testarossa is good, a moulded tray portraying seats, dashboard and steering wheel is provided which finishes the model off neatly. Wheels and tyres are a masterpiece, portraying accurately the full size. The crowning glory though, has to be the moulded, pre-sprayed bodyshell, again all the brute ferocity of the full size car is captured, making this model much to much of a desk ornament than a racer, it would be a sin to race this car competitively and break the bodyshell. The crowning glories are the transfers that adorn the car, bringing this model supercar to life.

Available from Amerang, Commerce Way, Lancing, Sussex BN15 8TE.

DIARY DATES

Swindon Off Road Club

The Swindon Off Road club are holding a series of meetings to modified and standard classes. The meeting will be held at the Wroughton Science (first) Museum on September 13. A two day indoor meeting will finish the series, this takes place on February 20/21 and will be held at the Croft Sports Centre, Swindon.

For further details contact:- Nick Catrall, 103 Overbrook, Eldene, Swindon, Wiltshire.

Twenty Four Hour Charity Event

A twenty four hour 1/10 endurance race is to be held at Donisthorpe Park, the meeting is to be held over September 5/6. All monies raised will be donated to charity. Race format will be as follows, one car, six drivers, one mechanic, one team manager and one marshall per team.

Further details from Jim Davis, Unit 4, Parkway, Heanage Street, B,ham B7 4LY.

G.E.C. Stychfields

Stafford are holding a 1/10 buggy spectacular on September 26/27 to modified rules. The meeting will be held on either sponge or rubber kit tyres, B.R.C.A. rules apply. A series of Mini Nationals will also be held by Stafford.

For information contact John Robson, 1 Aldersleigh Drive, Wildwood, Stafford. 0785 662242.



SPECIALIST MAIL ORDER SUPPLIERS OF CAR KITS SPARES & ACCESSORIES

21, Whitburn Street, Bridgnorth, Shropshire WV16 4QN, England. Tel: (07462) 2291. Telex: 336596 BCL UK G

RADIO CONTROL PRODUCTS

RCP THE CAT SPECIALISTS

We stock a comprehensive range of spares for the CAT. Hundreds of items in stock including all the latest modification and tune up parts.

RCP for MOTORS

We have over 200 motors in stock - both standard and modified - all the big names:-

- | | | |
|------------|-----|-------------|
| DEMON | --- | TRINITY |
| M.G. | --- | MIKE REEDY |
| SCHUMACHER | --- | SRM TWISTER |
| KYOSHO | --- | PARMA. |

Plus full range motor accessories, including steel pinions, springs, ballraces, cleaners, brushes (hard, soft, contoured, cut), etc.

RCP for TUNE UP PARTS

Wide Selection of parts from all the big names:-

- | | | |
|-------|-----|--------|
| SRM | --- | PARMA |
| TMS | --- | BRIMOD |
| NODIS | --- | KYOSHO |

RCP for ACCESSORIES & SPARES

You name it - we've got it. The pick of the best!

For further details, send for your FREE RCP Catalogue and Price List Now.

We are specialists in the supply of 1/10th Buggy cars, spares and accessories for the experienced enthusiast or novice. Write or phone for our free comprehensive catalogue and price list. MAIL ORDER HOTLINE - TEL: BRIDGNORTH (07462) 2291 (24 hours). RCP offers a fast and efficient fully insured mail order service. Credit card orders same day despatch (subject to availability). Please allow 7 days for clearance of cheques. Export enquires welcome. (VAT free). Opening Hours: Monday - Saturday 9am - 6pm

Postage/Packing/Insurance: £2.50 for kits/package deals - spares and accessories 75p per order (UK only). Export at cost. Building & Repair Service Available.