

**H**aving watched what Kyosho have been up to for the last year or so it has become obvious that Mr. K's marketing minions are involved in some kind of scale warfare.

Recently we have been inundated with 1/10th scale electric models of real life road and track cars, culminating in the Kyosho Scale Car Series.

It is interesting to speculate why.

Perhaps the market for dedicated racing machines is slowing up and so, faced with a need to keep sales up, the introduction of scale racers is the answer.

There is a certain logic to this – if you choose the right car, producing a scale version of a Ferrari F40 is a

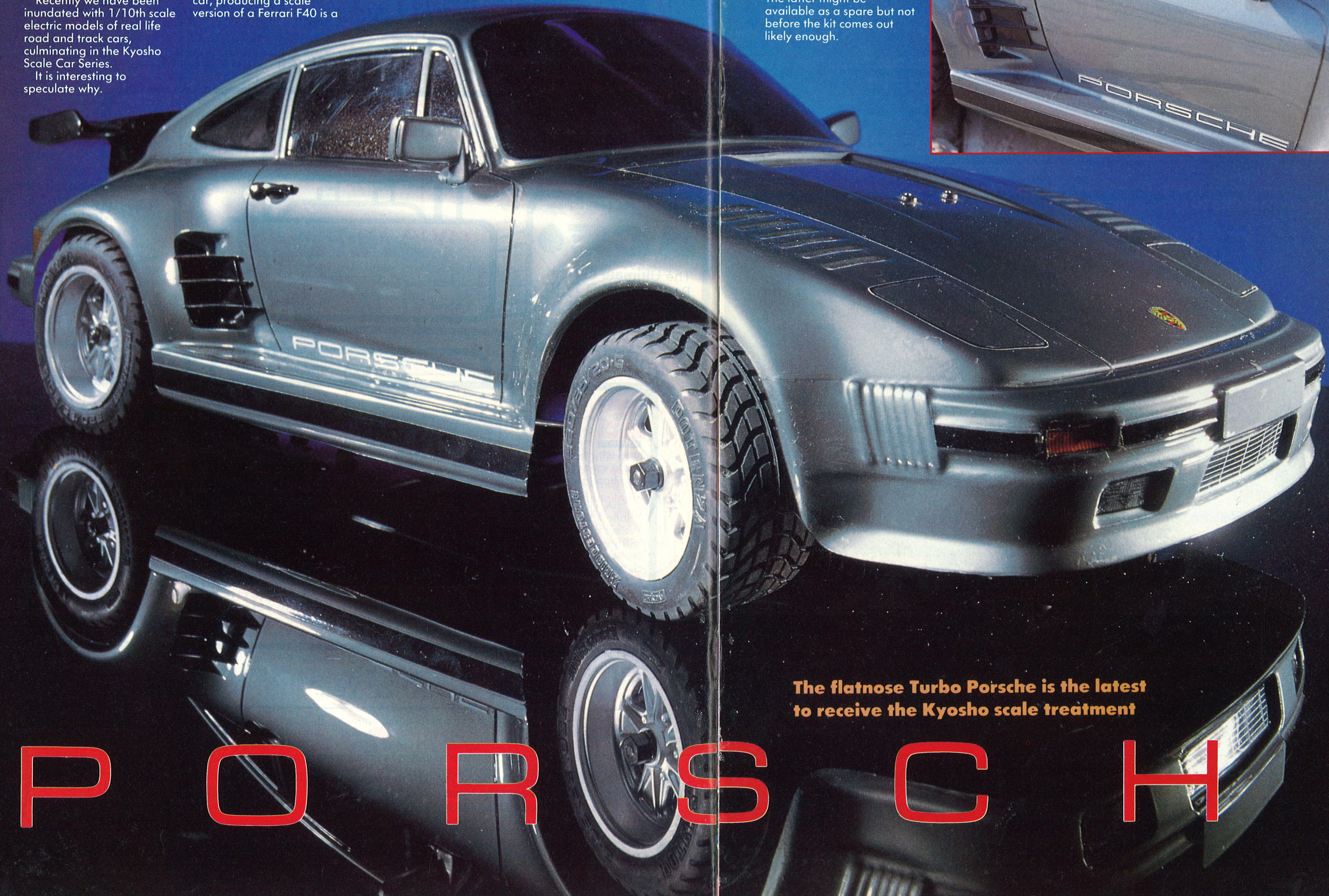
good idea, plenty of people have a thing about Ferraris. Try a Fiat Tipo though and the same might not apply (unless you actually own one of course). The beauty of this scheme, as no doubt

the back-room bods have said to Mr. K, is that we can use the same chassis every time and just change the bodyshell and perhaps the wheels and tyres. but, isn't this something the likes of Parma have been saying

and doing for ages, with their range of replacement polycarbonate bodyshells.

Acually, no.

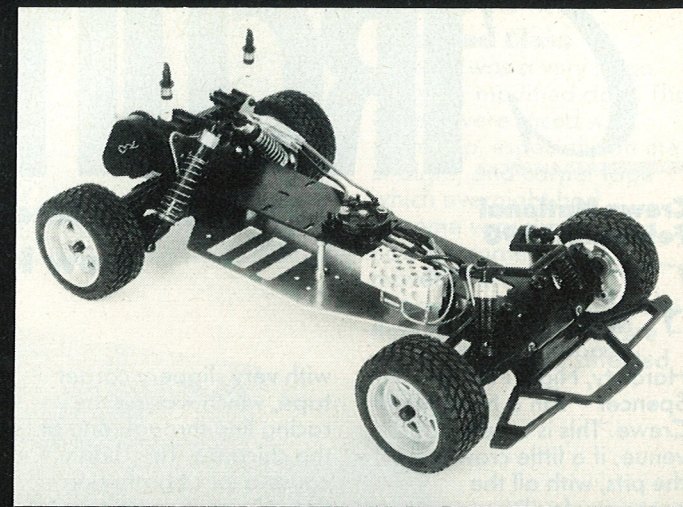
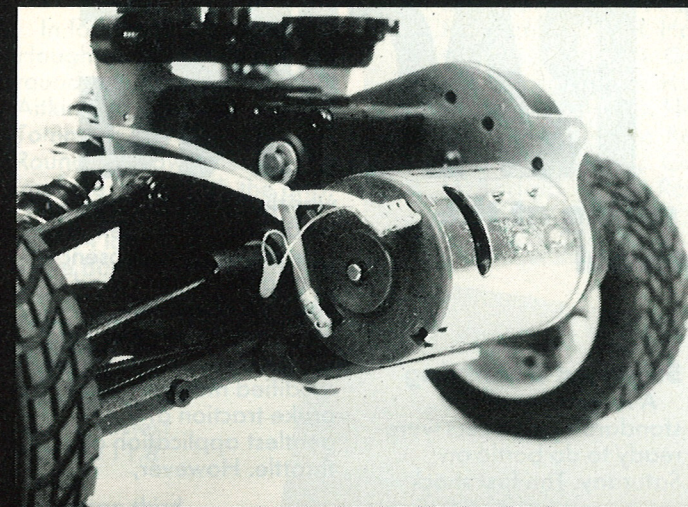
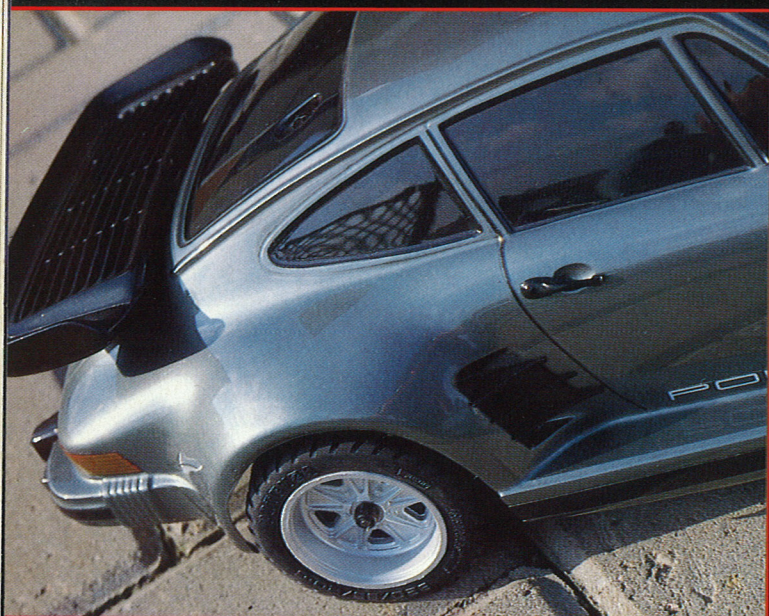
You see Kyosho are placing all their emphasis on producing a complete kit and not just a bodyshell. The latter might be available as a spare but not before the kit comes out likely enough.



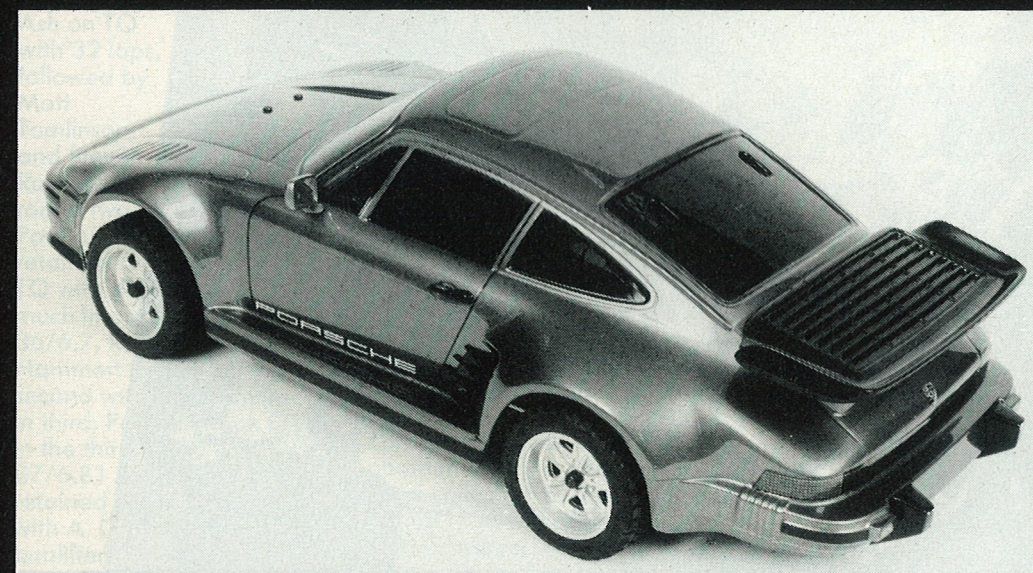
**The flatnose Turbo Porsche is the latest to receive the Kyosho scale treatment**

P O R S C H E ▶▶





**Standard 540 motor is included. Right: Rear short shocks give limited movement, but good handling on tarmac.**

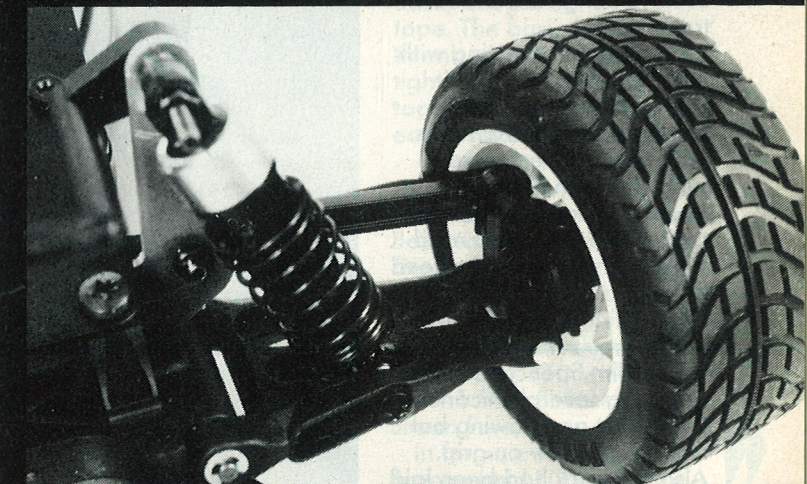
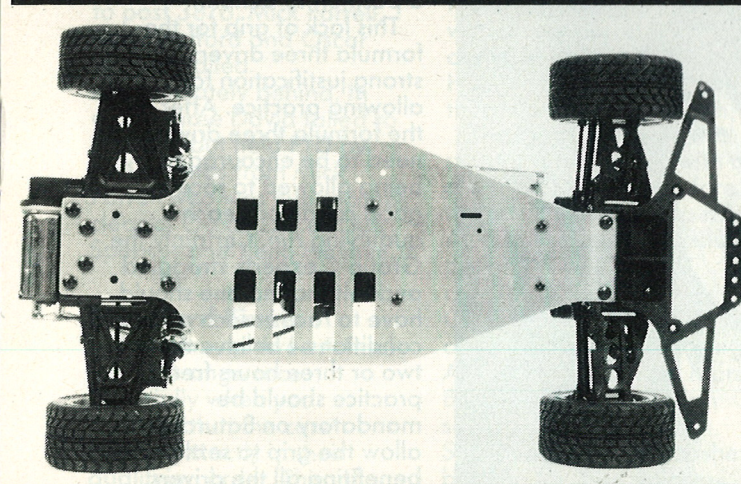


For model car magazine reviewers this is a bit of a bind because there is never

anything new to say about these cars except nice body, nice wheels and tyres and

by the way it's got an Ultima chassis and it goes just as well as all the other

**7 cells can be used although we advise 6 without ballraces. Camber is not adjustable and plastic shocks are standard – it all keeps the cost down.**



Ultima things thank you very much.

Ho Hum. Well, you can't have everything I suppose.

In the case of these latest two additions to the Scale Series, the Porsche Carrera and the Nissan 300ZX, the bodysells are indeed very nice. In the UK the Porsche would probably have more street credibility than the Nissan, based on the possibility of a real life choice, (whaddaya mean, you'd rather have the Datsun!?).

Both bodysells are fairly good scale representations of the real thing although to be honest the RCMC editorial team (that's the editor and his 50 per cent share of a secretary – hasn't yet found time to run a ruler over the real thing for an ultimate accuracy test.

Never mind; they look nice, go nice and if you can't afford the real thing, then it's a trip down the model shop instead.

What more can we say?