

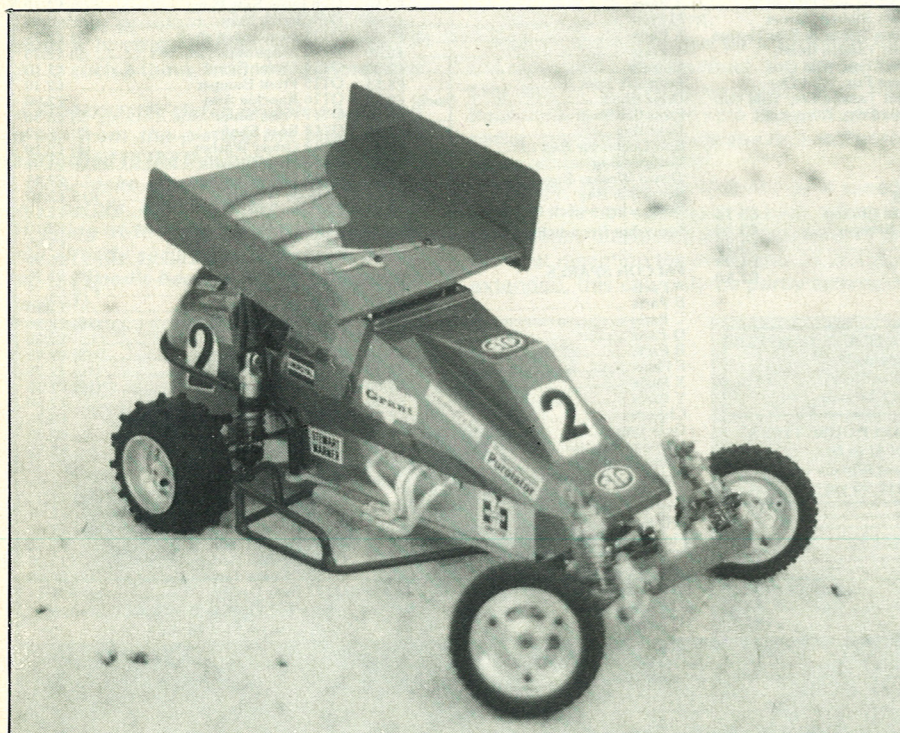
Puma Ascot Sprint Car

JOHN VARLEY takes a look at the Puma Ascot Sprint Car.

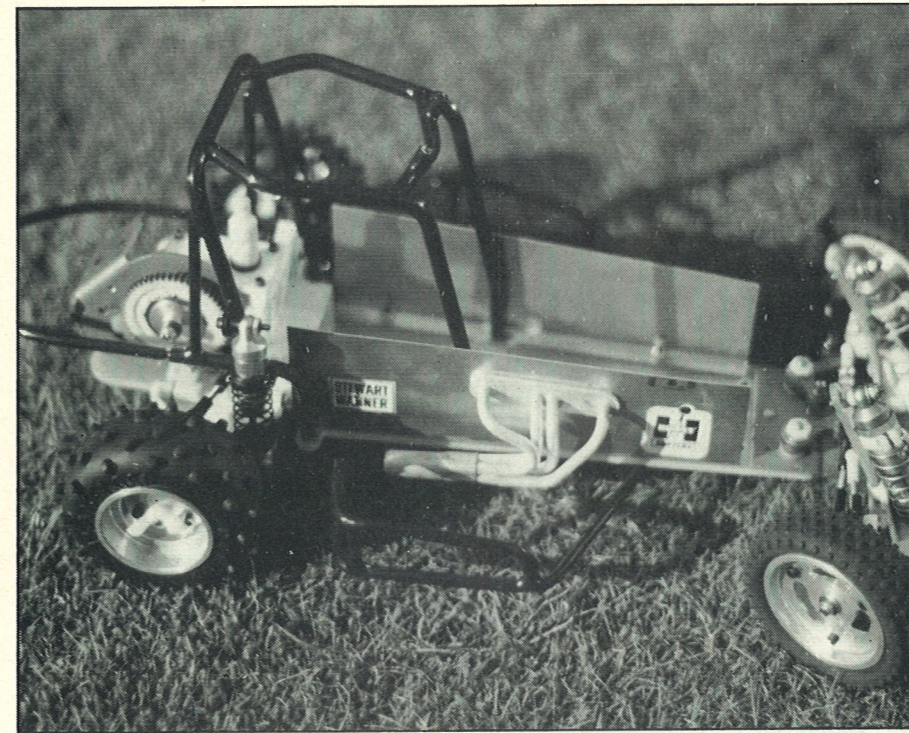
If you are one of those people who regularly raced your Associated RC10 last year, but find that you are struggling to match the new breed of 4WD car currently running at your local club. If you are looking to bring a fresh new look to your Sunday sport and can get your hands on an RC10 at a knock down price, then this conversion kit could fit the bill.

Produced in the USA on the west coast in the California town of Gardena, this is one kit from many that have grown up around the excellent RC10 two wheel drive car kit produced by Associated Electronics.

Given that you have an RC10 in good working order, this conversion kit retains the standard car's wheel base and track, replacing the pressed alloy chassis with a narrow fibreglass chassis of 1/8in. thickness. All holes are drilled and countersunk to take the rear suspension and gearbox, with provisions at the front to take the standard chassis upturned member, with its full suspension and steering mechanism.



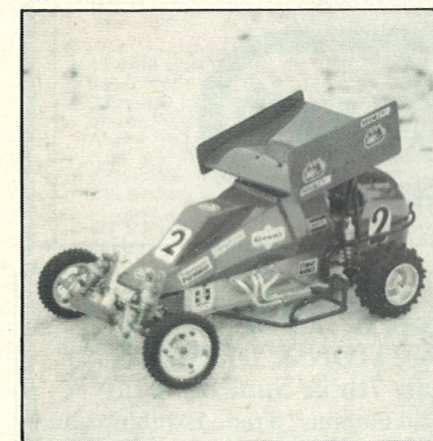
Puma's RC10 Sprint Car conversion does look every bit the mean fast oval racer.



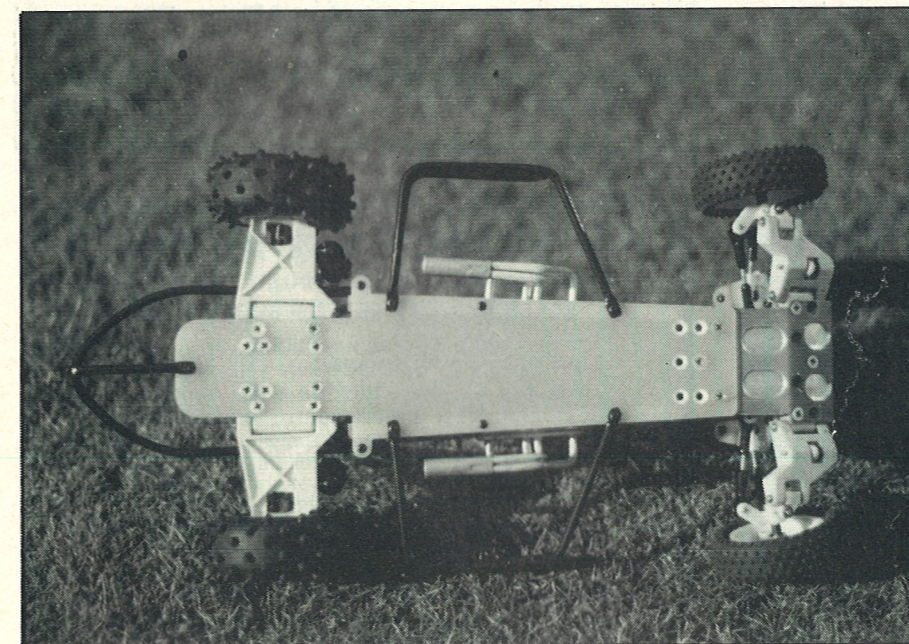
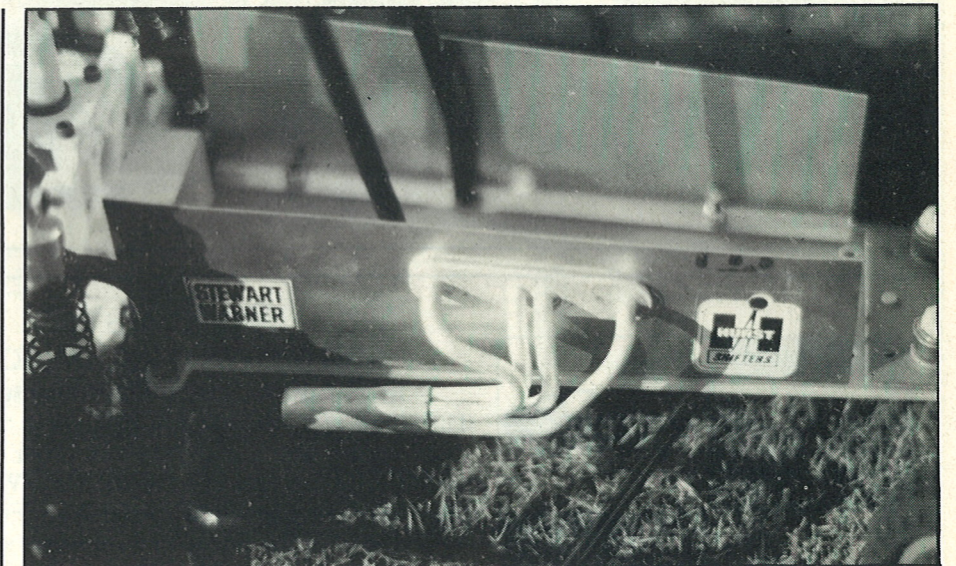
A very neatly pre-built and pre-painted roll cage is included in the kit and is functional as well as practical as the dirt oval is no picnic, action is fast and furious.

Attached to the new chassis, are aluminium side panels held in position with socket head screws and nyloc nuts. The photos will show that the rather plain side panels are enhanced with very realistic looking four branch exhaust manifolds each side. Alloy tubes formed into the exhaust pipes, converging into a single brass outlet, just crying out for a 'high polish' job to be done on them.

A four part roll-cage in aluminium, welded, to form side nerf bars, a driver's roll cage, and a new nerf cage, form the real basis of this conversion.



Right, nicely prefabricated Hooker Headers are included as standard in the kit and only need fixing into position. Below, full length fibreglass chassis replaces the RC10 original.



Using high tensile socket screws, the cage creates a very strong roll frame, that would appear to take the very severest of treatment. Sprayed red, it gives an aesthetically pleasing appearance.

The balance of parts in the kit, comprises a two part lexan body and small and large aerofoil wing. Having seen such a car in action, that large wing certainly does give immense downforce. It may dominate the car, but it is effective.

Having chosen your colours and style of paint job, an extensive array of decals are provided to give your car that realistic professional look.

You will note that we have further enhanced this conversion with the addition of the excellent team Losi ballraced steering assembly and alloy wheel discs from the same source. The alloy discs almost appear to be a 'must' in order to create the right overall appearance.

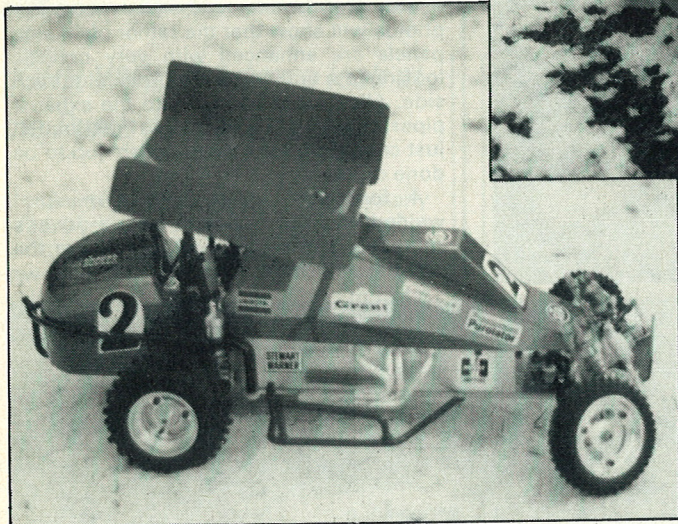
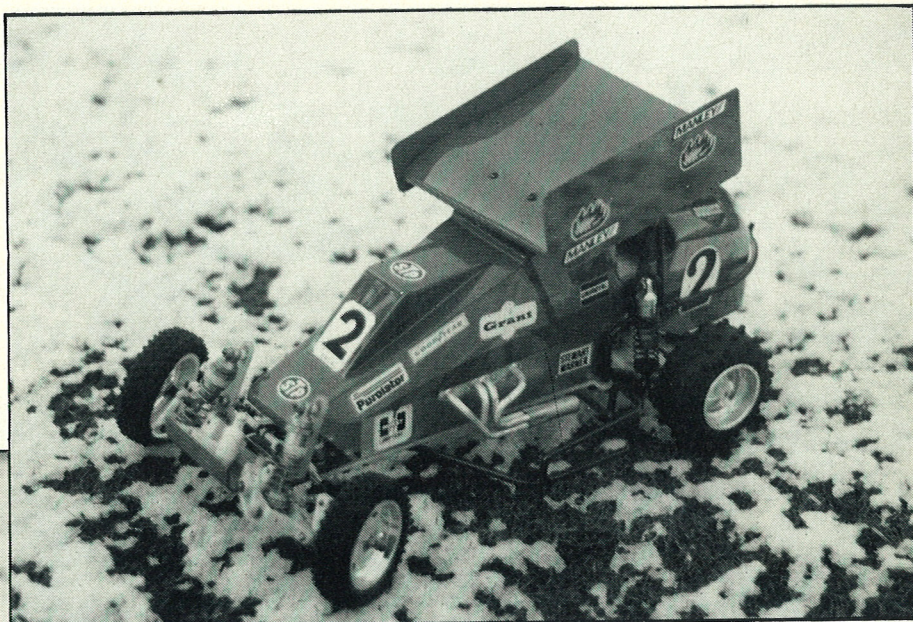
With the narrow chassis, all radio gear is positioned in line, including the battery pack. Six cell or seven cell configuration can be used, and believe me with seven

cells and a modified motor installed this car can give your 1/8th scale gas stock cars a run for their money.

Stock car clubs could introduce a sprint car heat to add variety to the club meetings. Simple oval tracks on your company car park, or local school playground can easily be laid down. Indoor carpet clubs could introduce a modified 'oval' thrash for this car, and it will definitely be the race that everyone stops to watch.

Fun to race, visually acceptable, and puts your old equipment back into use, this kit is available from Puma Models at a price of £79.95.

Say you read about it in Radio Race Car.



Bill Jones has just completed an oval circuit especially for this type of car, it is also understood that several other clubs are constructing oval circuits.

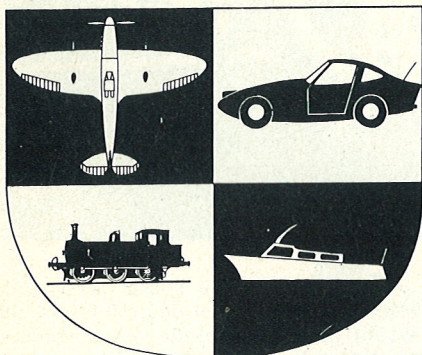


SANDOWN PARK 1988

MODEL SYMPOSIUM, EXHIBITION & DISPLAY at Sandown Park Racecourse, Sat. 7th & Sun. 8th May

The Elmbridge Model Club Thirteenth "World Famous" Trade Exhibition and Display of Radio Controlled and other Working Models, will be taking place on Saturday 7th and Sunday 8th May. With more Exhibitors than ever before, the Show has expanded to the New First Floor Exhibition Hall, which will house more of the Retail and Importer side of the Exhibition. Sandown covers all kinds of Working Models — be it Aircraft, Helicopters, Boats, Cars, Railways and Engineering Stands. With a full days Display of Flying, Boating and Car Racing.

Advance Booking Enquiries to: Mr. G. Hazelwood, 46 Wrens Avenue, ASHFORD, Middlesex TW15 1AP.



AVON MODELS
39 Locking Road
Weston Super Mare
Tel: (0934) 28305
CLOSED MON, TUES

TAUNTON MODEL CENTRE
6 The Bridge
Taunton
Tel: (0823) 77700
CLOSED THURSDAY

*All makes of model cars sold
Ring for Details Free Fast Charger
Top Discounts every Sunday at
Weston-super-Mare — Open 10 a.m. to 1 p.m.*

LOWEST PRICES GUARANTEED
Part Exchange, model railways and all types of
models taken, plus cash purchase
PAY BY INSTALMENTS

All credit cards taken Same day mail order

P.S. HOBBIES & MODELS

32 Castle Road, Scarborough Tel: 377020
SCARBOROUGH'S PREMIER BUGGY SHOP

100% Spares availability on
PB RACING PRODUCTS IN THE NORTH
Yes it is ALL here including the Maxima,
Conversion Kits, Speed Controllers, All Spares
Kyosho motors, brushes, Parma, Sanyo, P&S Sanyo nicads
Latest Futaba Speed Controllers 111B, 112B.
Acoms latest FET controller, also High torque Mini servo.
Latest Tamiya Thunder Shot, Super Sabre
Burn up the Opposition with KYOSHO, S BURNS
4WD OFF ROAD IC CAR £299.00 in Stock Now
Kyosho Mid OPTIMA

Telephone Orders taken SEVEN DAYS A WEEK 8am TILL 10pm
Send Large SAE and 50p in stamps for lists